

www.progowear.co.za

ProGO
wear

WEAR MANAGEMENT SERVICES
WEAR SUPPLIES



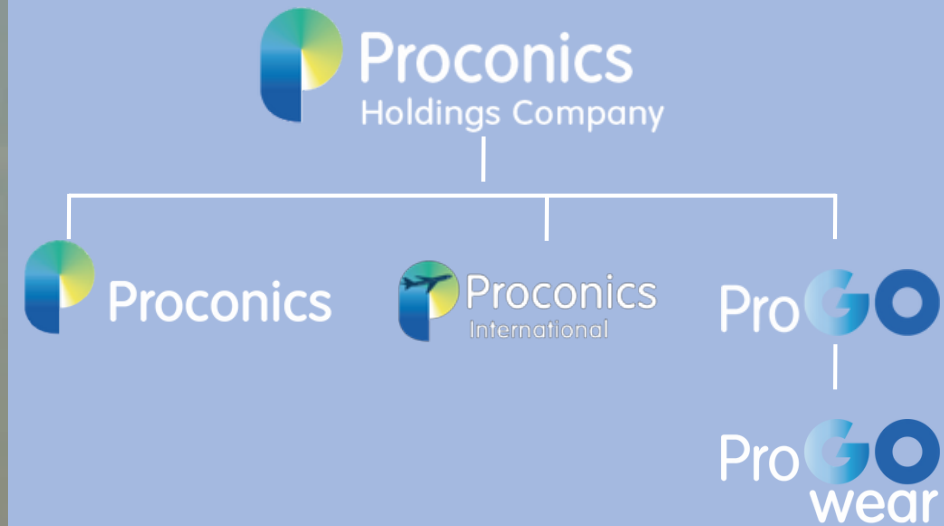


Proconics Group Of Companies

ProGO is in the fortunate position to be a daughter company of a major Engineering and EPC company in South Africa, the Proconics Group.

And being part of the Blue-Collar execution company, ProGo, we are thrilled to be the most exciting addition to the Group.

Level 1 BBBEE
30% Black Woman Owned
51% Black Owned





About ProGO Wear

Reliability and solutions.

Solutions to increase operational reliability and reduce cost

ProGO wear supplies various wear materials to combat abrasive wear in the mining industry. We aim to reduce the total cost of ownership infrastructure and increase reliability of plants for optimum throughput.



ProGO Wear Vision

Double business with half the impact.

Striving to become the most visible wear company in the wear industry, characterized by quality workmanship, quality products, and the fundamental beliefs of our Core values.

Reliability

Have stock in hand

Values

Do the right thing.

Quality

Services & Relationships

Improvement

New Technologies

OUR TEAM



Sias Suurd

General Manager



Hendrik Elixir

Operational Team Lead



Thulani Mazibuko

Draughtsman



Shalene Tracey

Project Administrator



Les Findlay

Consultant



=

Company Values



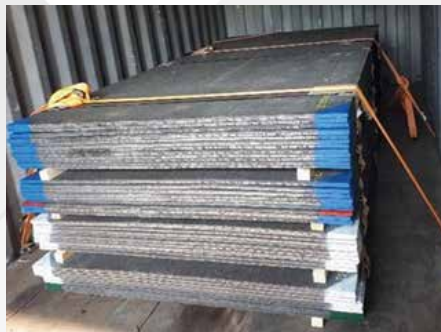
Innovating and inspiring consumers.

Core values are the fundamental beliefs of our company. Prevention is better than cure and that by assisting our clients to proactively maintain and renew their critical infrastructure we will help them to ensure that they run safer, more stable and more predictable operations.



Our Services

Supplies, Fabricate and Maintenance



ProGO wear can fabricate wear parts from our wear plate.

Wear parts include:

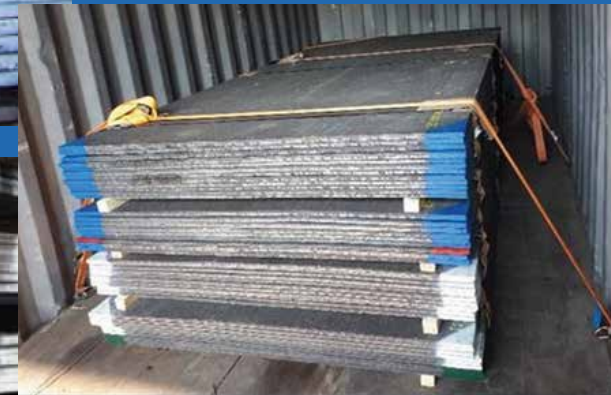
- Fabrication of Hoppers and Cyclones.
- Cut, bend or rolled liners to fit in chutes, buckets blades and spirals.
- Cut to size liners with CSK holes or stud welded.





Wear Management Services our core Product

Chromium carbide is used to coat the surface of another metal in a technique called bulk welding. ABRACLAD 60 has a nominal 32% Cr and 4.5% CH composition with small additions of manganese and other elements, this has been refined to offer the ideal combination of abrasion and impact resistance achieving a hardness of 60-63 HRC (MORE DURABLE THAN THROUGH HARDENED STEEL)





SOLUTIONS

Merchant Plate

- Superior Products
- Local

Projects

- Design
- Fabricated

Reliability

- Catalogued kits
- Wear rates

TCO

- Pay-as-u-go
- Performance guarantee



Merchant plate

Abraclad 60 – 30% Chrome, 2 % manganese , 5% carbon Hardness >60 HRc [premium]

PGW 700 - 24- 28% Chrome, >1% manganese, 5% carbon, Hardness 58 – 62 Hrc [standard]

Thicknesses

8mm (4/4)

10mm (4/6)

12mm (6/6)

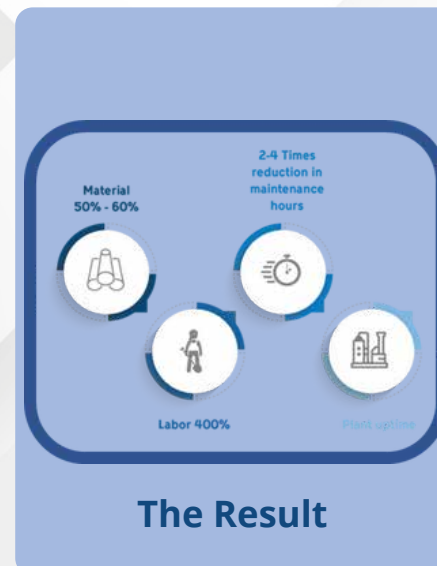
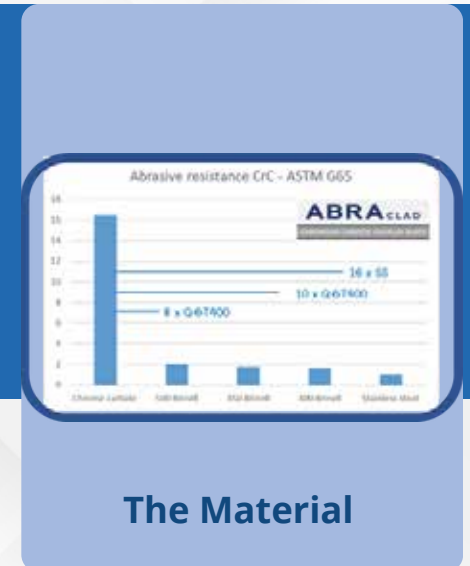
16mm (8/8)

20mm (10/10)

24mm (12/12)

29mm (17/12)

- Direct supply from warehouse
- < 1 day delivery turnaround
- Cut to size liners





Projects

Completed projects:

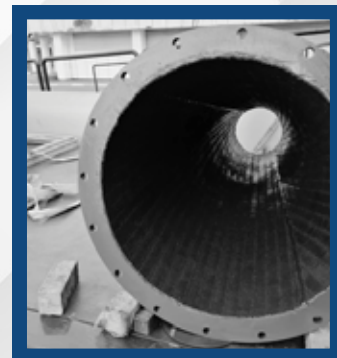
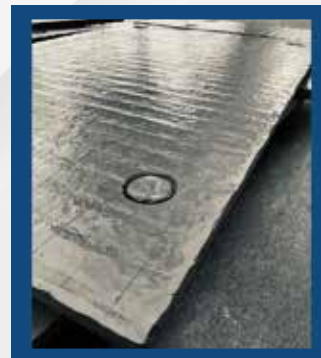
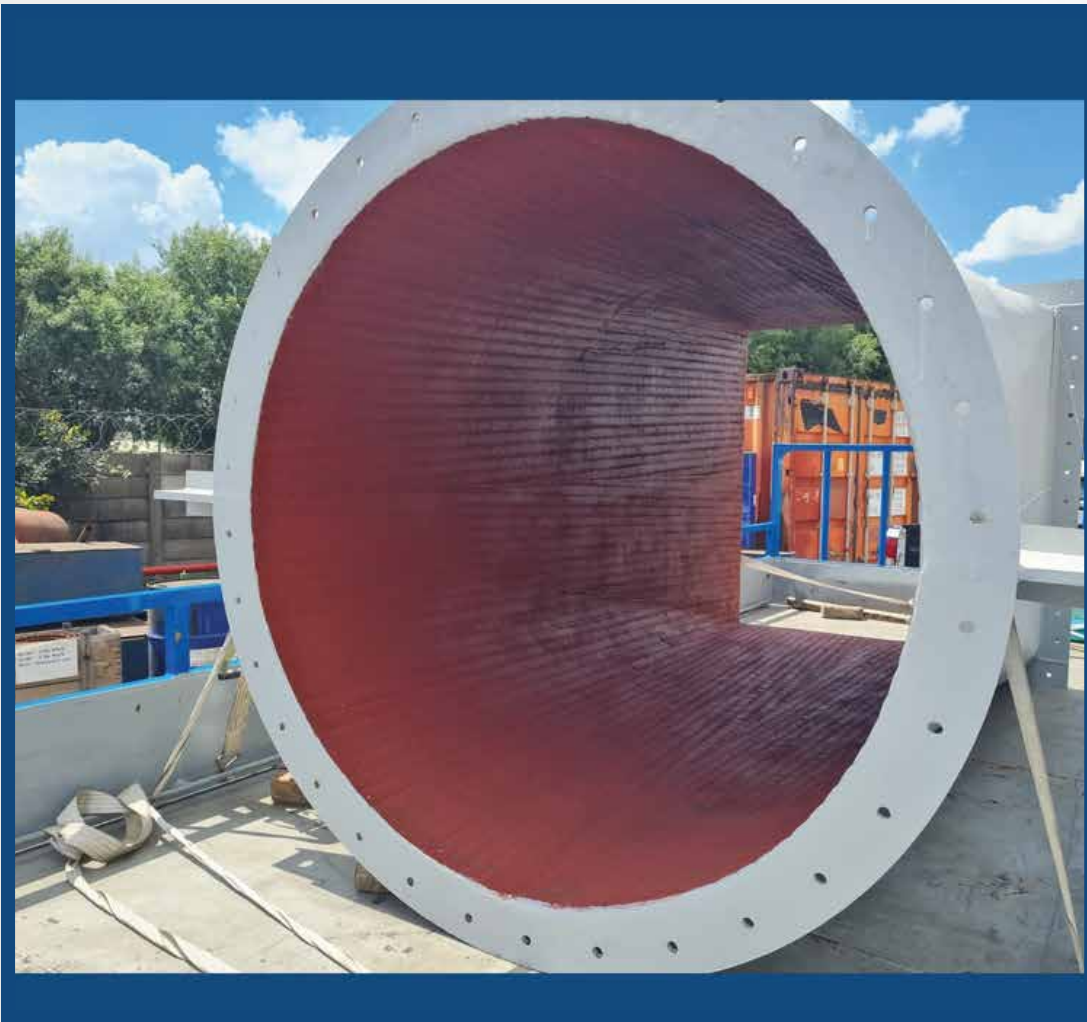
Furnaces - Feed Chute pipes
- Burner tips

Oil & Gas - Pulverized fuel pipes
- Mill liners

Cement - Vertical roller mill wear parts
- Liners
- Pipes

Power Generation - Ash handling systems
- Mill liners

Sugar & Paper - Hammers for mills
- Deck liners



= Cyclones



Cyclone fabricated from Chrome carbide material



Cyclone fabricated with mild steel and then rubber lined with liners fitted afterwards.



#ABRACLAD60

#ENDURING

#CHROME CARBIDE

#LONGTERM



Furnace feed chute pipes and tips

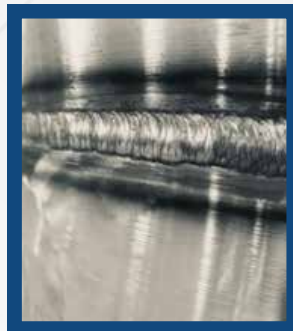
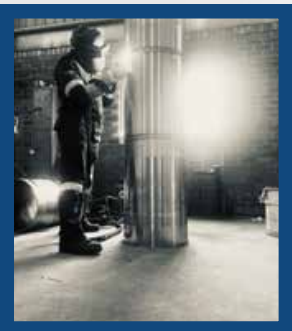
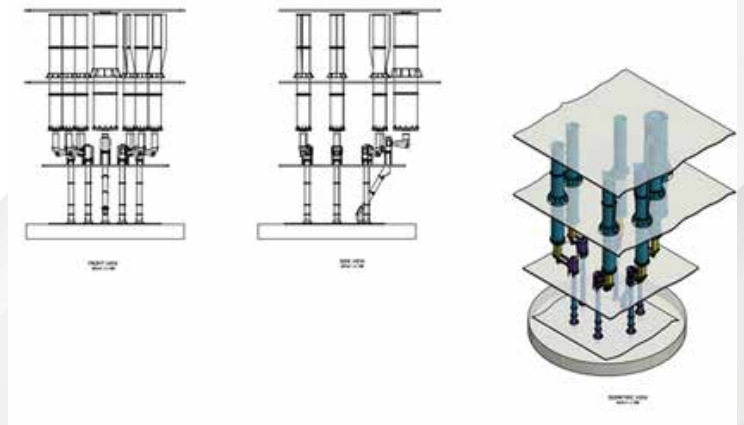
Feedchute tip with waterjackets welded around chrome carbide pipe.

Feedchute tips manufactured to 1mm tolerance over 2000mm for copper plates to be fitted on the outside

ProGO draw and model pipes from 3D scans and assist to standardize on equipment.

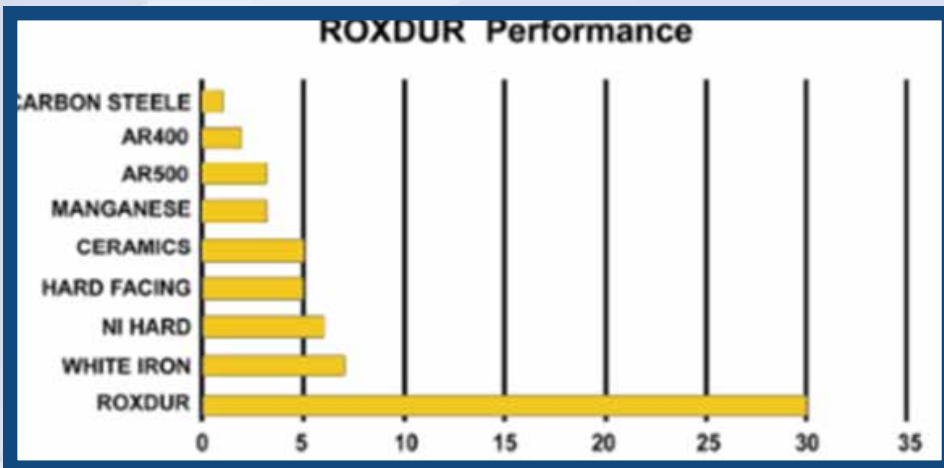


ISOMETRIC VIEW
SCALE 1:100



=

Reliability



Development of plant catalogues

Tracking of installation and wear rates

Notification on when parts need to be ordered and delivered in time for next shutdown

Tracking of life cycle costing

Benchmarking against lowest total cost of ownership



Industry Sectors

We offer global solutions across a wide range of industry sectors. Discover the key issues and drivers for your industry sector as well as the services, standards and solutions to address those challenges.



MINING INDUSTRY

**PROCESS PLANT
INDUSTRY**

**PAPER & PULP
INDUSTRY**

CEMENT INDUSTRY

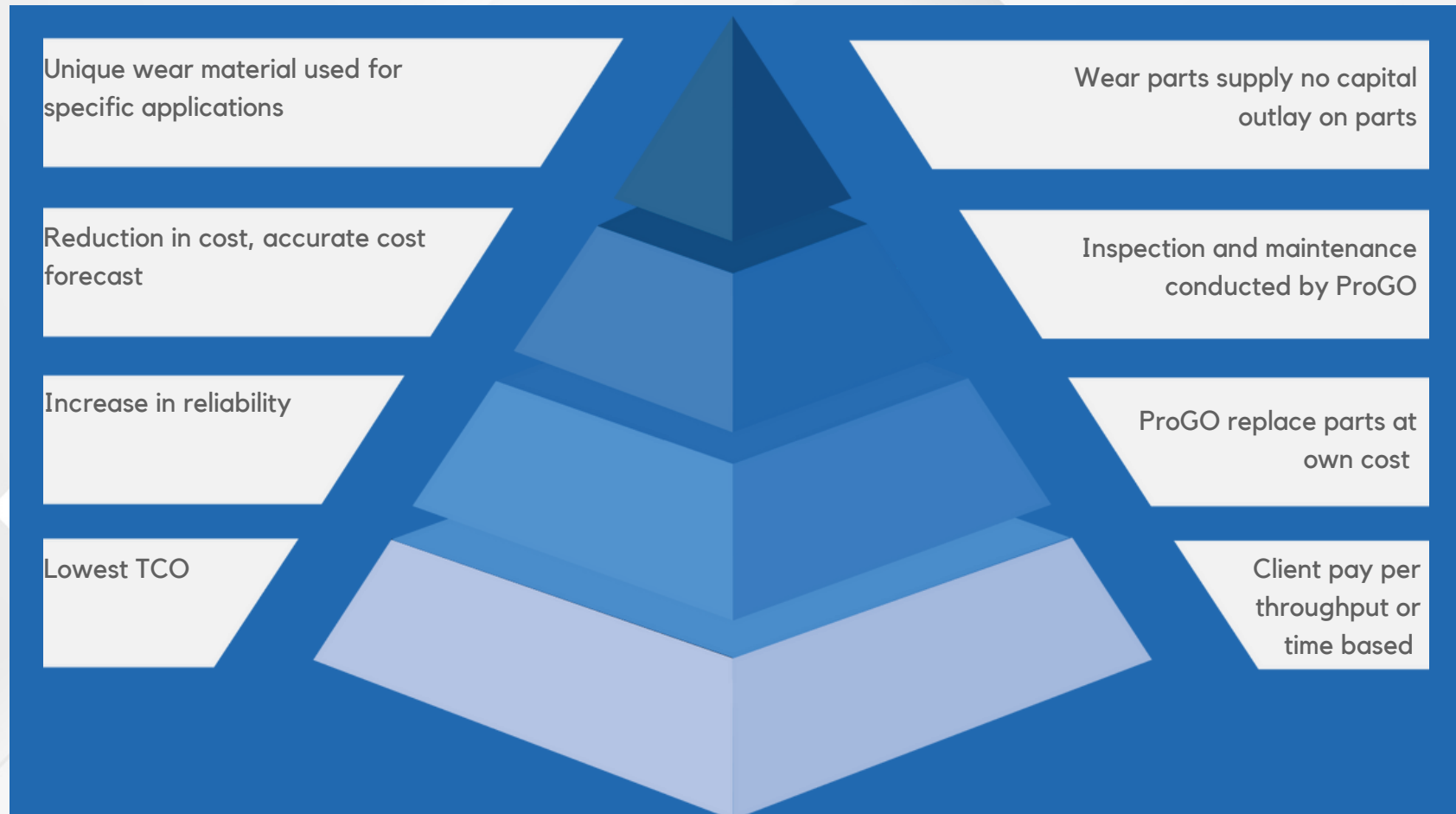
POWER INDUSTRY

STEEL INDUSTRY



Total Cost of Ownership

Skin in the game



Contact

Sias Suurd

B.Eng mech, GCC Mines and works, MBA
Executive: Mining and Wear Management

M: 079 506 0159

T: 016 004 2340

The logo for ProGOwear features the word "Pro" in a white sans-serif font, followed by "GO" in a large, blue, stylized font where the 'G' and 'O' are interconnected. Below "GO" is the word "wear" in a white, lowercase sans-serif font.

ProGO
wear

Johannesburg Office

Building J, 2nd Floor
Hertford Office Park,
90 Bekker Road
Vorna Valley, Midrand
Gauteng
1685

Secunda Workshop

Shop 4, Kingfisher Street,
X70
Secunda
Mpumalanga
2302

Sasolburg Workshop

31 Venus Street
Naledi
Sasolburg
Free State
1947

Heidelberg Workshop

14 Albert street
Heidelberg,
1441